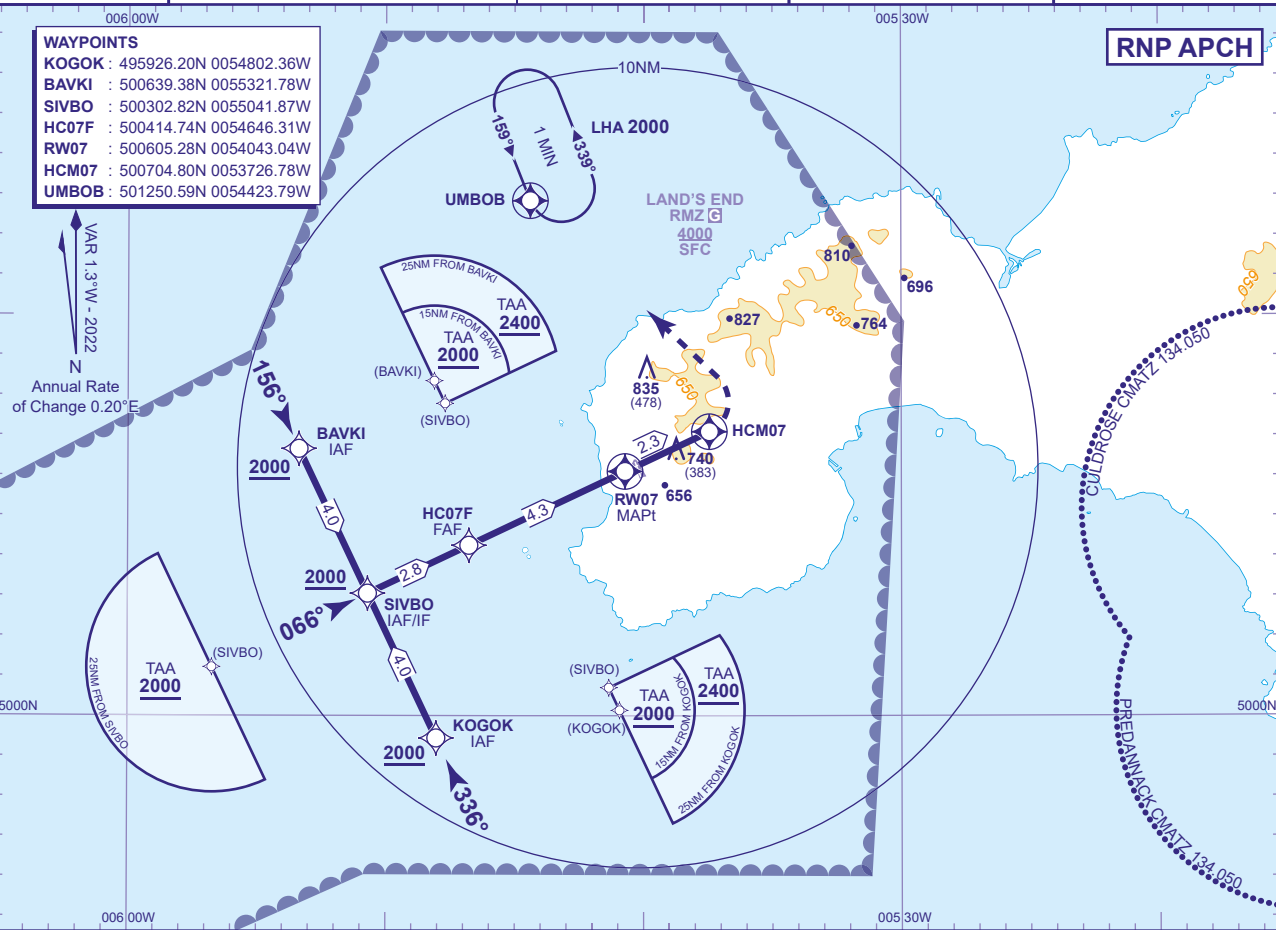


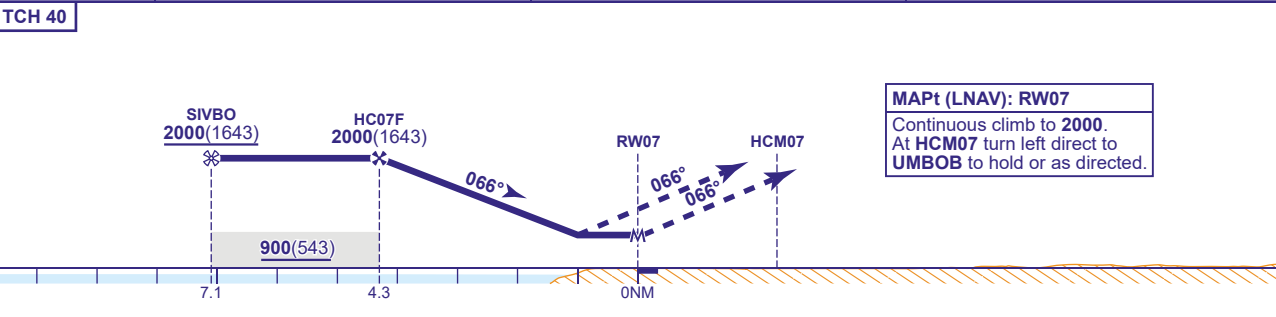
INSTRUMENT APPROACH CHART - ICAO

LAND'S END  
RNP  
RWY 07  
(ACFT CAT A ONLY)

<div>24</div> <div>MSA 25NM ARP</div>	TWR 120.255	LAND'S END TOWER	AD ELEVATION 398	TRANSITION ALTITUDE 3000
	ATIS 122.830	LAND'S END INFORMATION	THR ELEVATION 357	
			OBSTACLE ELEVATION 835 AMSL (478) (ABOVE THR)	
BEARINGS ARE MAGNETIC				



RECOMMENDED PROFILE Gradient 6.12%, 372FT/NM			
NM to RW07	4	3	2
ALT(HGT)	1880(1523)	1510(1153)	1140(783)



Aircraft Category		A	Rate of descent	G/S KT	160	140	120	100	80
OCA (OCH)	LNAV	860(503)		FT/MIN	990	870	740	620	500
VM(C)OCA (OCH AAL)	Total Area	1040(642)							

**NOTE 1** Use of this RNP procedure is strictly limited to flights authorised by the Aerodrome Authority.  
**2** Pilots must be appropriately qualified to fly RNP approaches. See EGHC AD 2.20 Para 4.  
**3** Threshold QFE is available on request.

CHANGE (2/24): ATIS ADDED.